




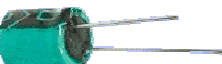
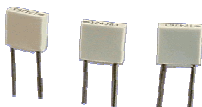

## DI discreet component class 'A' parts list:

### Resistors:


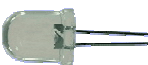


Value - all ¼ watt 1% tolerance

Value		Quantity
180Ω	brown/grey/black/black	2
680R	blue/grey/black/black	2
3K9Ω	orange/white/black/brown	4
4K7Ω	yellow/violet/black/brown	2
10KΩ	brown/black/black/red	2
15K	brown/green/black/red	2
27K Ω	red/violet/black/red	1
82KΩ	grey/red/black/red	2
100KΩ	brown/black/black/orange	2
330KΩ	orange/orange/black/orange	2
390KΩ	orange/white/black/orange	2
1MΩ	brown/black/black/yellow	3

### Capacitors:

Value		Quantity
27pF ceramic disc		1
0.1uF ceramic disc		2
470uF/25V electrolytic		1
47uF/25V electrolytic		1
0.1uF (100nF) MKT		1
10uF/50V non-polar electrolytic		2

### Semiconductor devices:

1N4148 diode		9
Power indicator: LED various colours to choose from		1
BC547 NPN general purpose signal transistor		8
BC557 PNP general purpose signal transistor		3

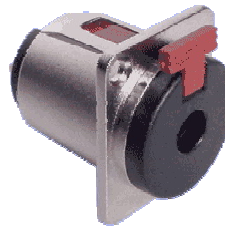
LM7815 TO-220 +15V regulator



1

### Hardware:

Phono jack socket with locking feature.  
Altronics P/N P0064.



1

XLR male socket



1

Diecast Aluminium Box With Flanges  
171x121x55 IP66  
Altronics P/N H0427



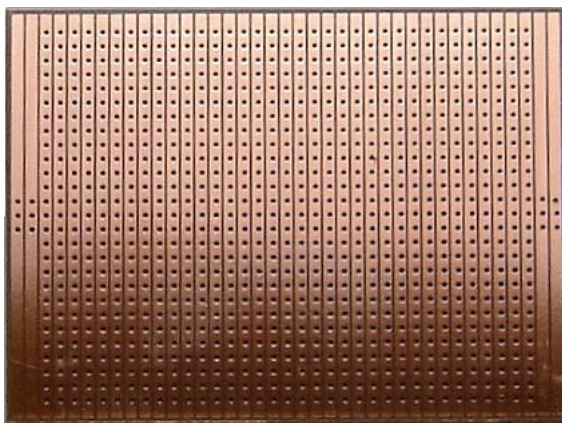
1

Mini rocker switch



1

**Vero Board 150x100mm 1" Pitch**



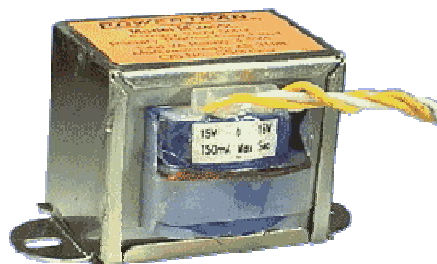
**1**

**IEC mains socket**



**1**

**30V / 240V 150mA Centre Tapped  
Transformer (EI Core) Altronics P/N  
M2855L**



**1**

**Various M3 nuts, bolts & washers as  
required**



**Hook-up wire & solder etc.**

Design Copyright © Kelvin Fleming 2011

This document is the intellectual property of Kelvin W. Fleming and is available to private users for their own use in the course of construction or repairs. It may not be reproduced for the purposes of education, public displays or the generation of profit without the expressed permission of the owner.

Handwritten signature of Kelvin Fleming.